

EPILEPSY FOUNDATION OF FLORIDA, INC.
FINANCIAL SUMMARY
YEARS ENDED JUNE 30, 2016 AND 2015

Year Ended
June 30, 2016

Year Ended
June 30, 2015

SUPPORTING SERVICES PERCENTAGES:

SUPPORTING SERVICES PERCENT OF REVENUES	7.9%	7.7%
SUPPORTING SERVICES PERCENT OF EXPENSES	7.9%	7.6%

WHERE DO THE DOLLARS RAISED GO?

PATIENT SERVICES	63.2%	66.9%
PREVENTION & EDUCATION SERVICES	28.9%	26.9%
FUNDRAISING	4.1%	4.3%
MANAGEMENT & GENERAL	3.8%	3.5%
CHANGE IN NET ASSETS	0.0%	-1.6%
	<u>100.0%</u>	<u>100.0%</u>

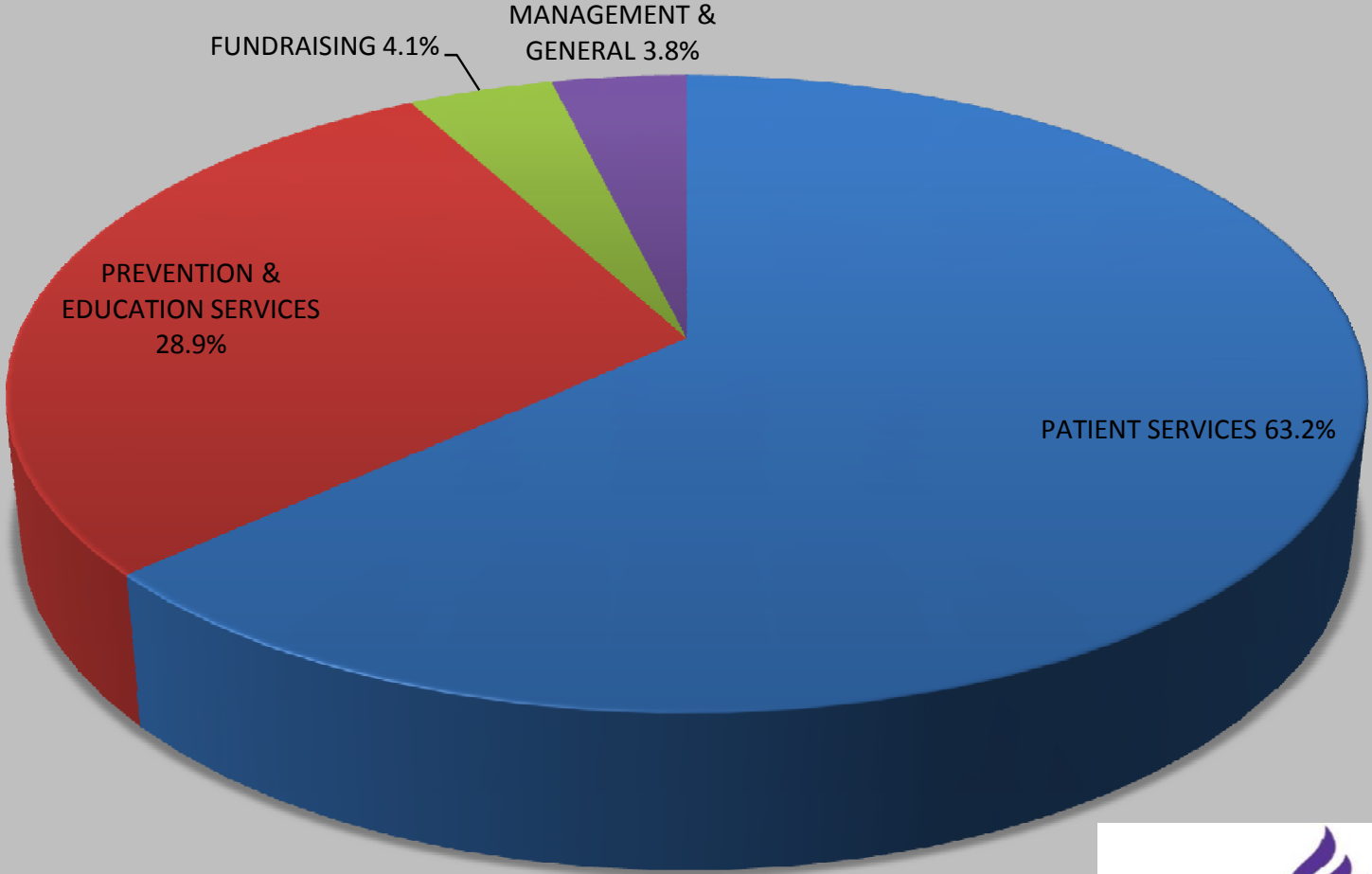
EXPENSES BY CATEGORY:

PATIENT SERVICES	63.2%	65.9%
PREVENTION & EDUCATION SERVICES	28.9%	26.5%
FUNDRAISING	4.1%	4.2%
MANAGEMENT & GENERAL	3.8%	3.4%
	<u>100.0%</u>	<u>100.0%</u>

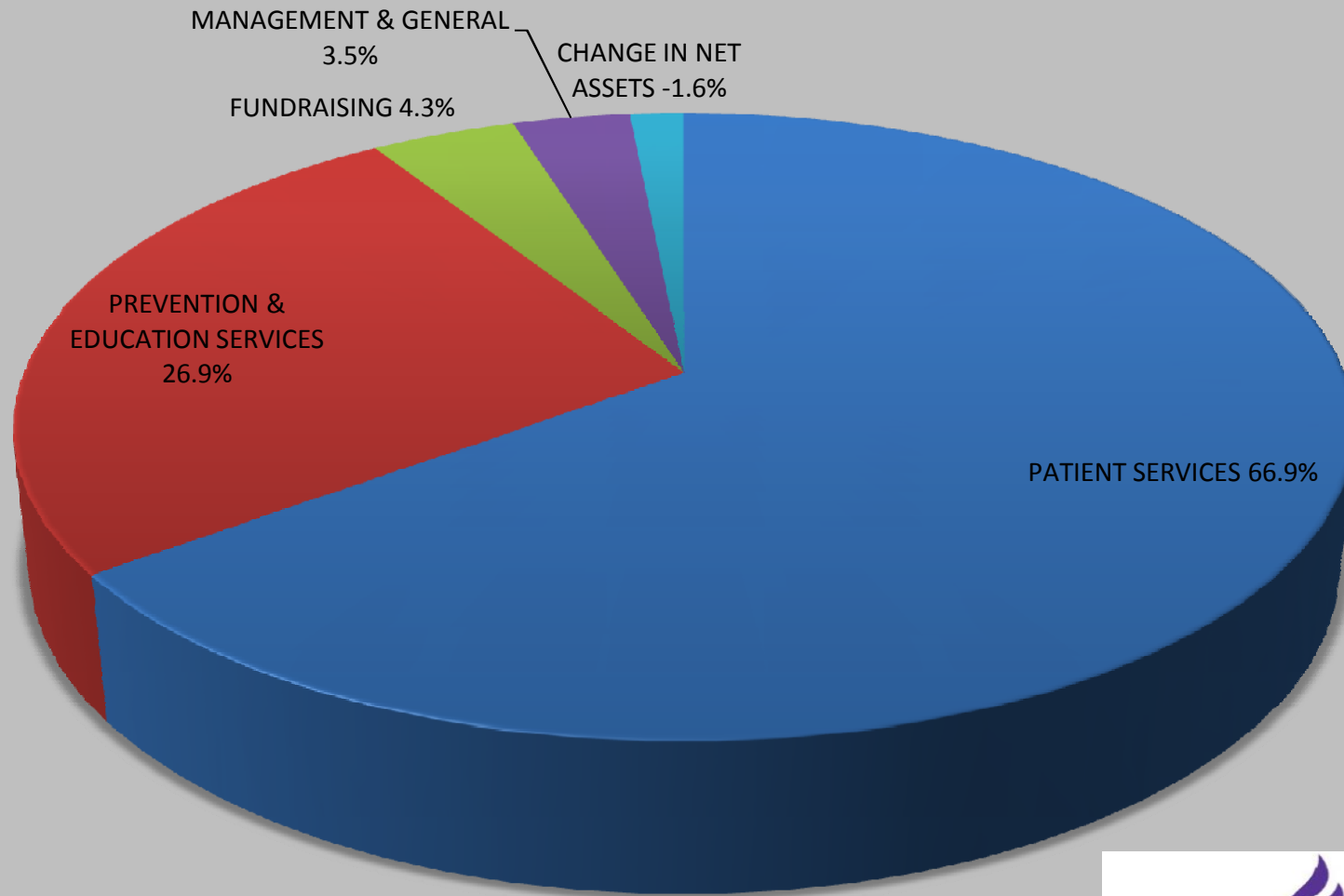
REVENUE BY CATEGORY:

GRANTS	66.7%	62.0%
CONTRIBUTIONS	11.3%	12.7%
UNITED WAY	1.7%	1.6%
SPECIAL EVENTS	11.0%	9.5%
IN-KIND MEDICAL SERVICES	8.1%	13.0%
FEES & OTHER INCOME	1.2%	1.2%
	<u>100.0%</u>	<u>100.0%</u>

Where Do The Dollars Raised Go? Year ended June 30, 2016



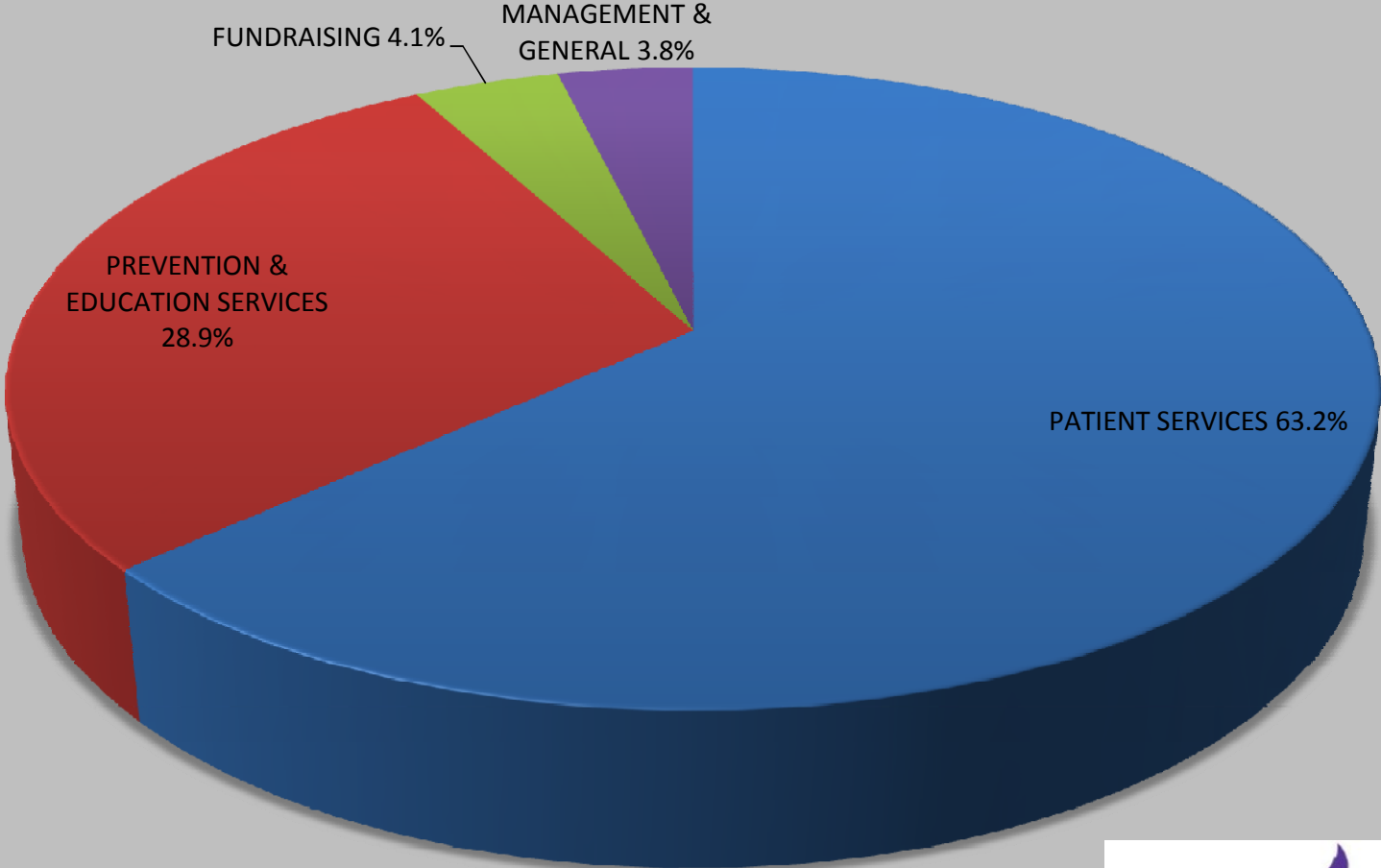
Where Do The Dollars Raised Go? Year ended June 30, 2015



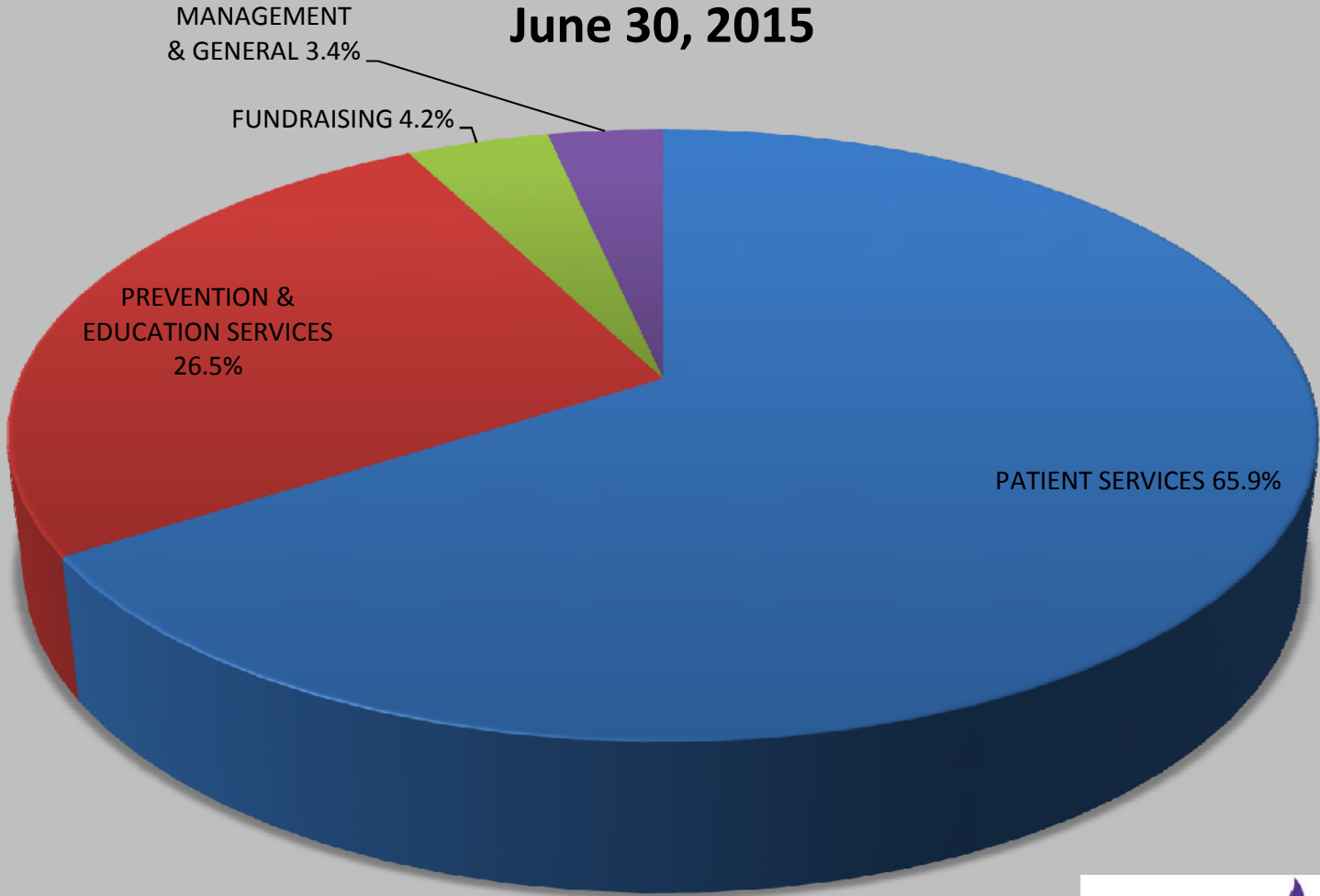
**EPILEPSY
FOUNDATION**

Florida

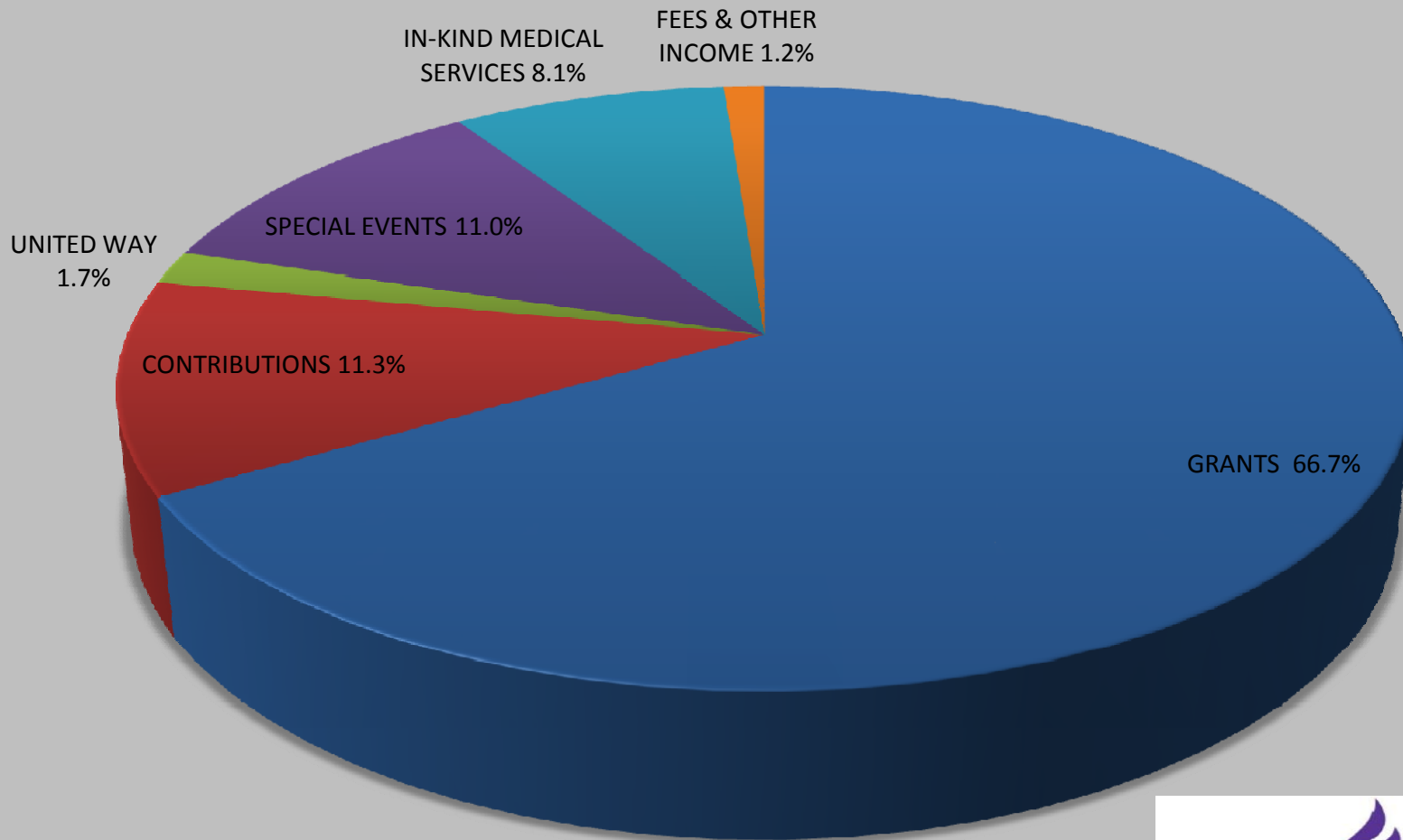
Expenses By Category June 30, 2016



Expenses By Category June 30, 2015



Revenue By Category Year ended June 30, 2016



**EPILEPSY
FOUNDATION**
Florida

Revenue By Category Year ended June 30, 2015

