

**EPILEPSY FOUNDATION OF FLORIDA, INC.  
 FINANCIAL SUMMARY  
 YEARS ENDED JUNE 30, 2012 AND 2011**

	Year Ended June 30, 2012	Year Ended June 30, 2011
<b>SUPPORTING SERVICES PERCENTAGES:</b>		
SUPPORTING SERVICES PERCENT OF REVENUE	9.5%	9.3%
SUPPORTING SERVICES PERCENT OF EXPENSE	9.8%	9.3%

<b>WHERE DO THE DOLLARS RAISED GO?</b>		
PATIENT SERVICES	72.9%	76.7%
PREVENTION & EDUCATION SERVICES	14.1%	14.3%
FUNDRAISING	6.0%	5.6%
MANAGEMENT & GENERAL	3.6%	3.7%
NET ASSETS	<u>3.4%</u>	<u>-0.3%</u>
	<u><u>100.0%</u></u>	<u><u>100.0%</u></u>

<b>EXPENSES BY CATEGORY:</b>		
PATIENT SERVICES	75.5%	76.4%
PREVENTION & EDUCATION SERVICES	14.6%	14.3%
FUNDRAISING	6.1%	5.6%
MANAGEMENT & GENERAL	<u>3.8%</u>	<u>3.7%</u>
	<u><u>100.0%</u></u>	<u><u>100.0%</u></u>

<b>REVENUE BY CATEGORY:</b>		
GRANTS	65.2%	64.1%
CONTRIBUTIONS	9.7%	4.9%
UNITED WAY	1.8%	2.6%
SPECIAL EVENTS	5.5%	8.4%
IN-KIND MEDICAL SERVICES	17.3%	16.7%
FEES & OTHER INCOME	<u>0.5%</u>	<u>3.3%</u>
	<u><u>100.0%</u></u>	<u><u>100.0%</u></u>

## Where Do The Dollars Raised Go? Year ended June 30, 2012

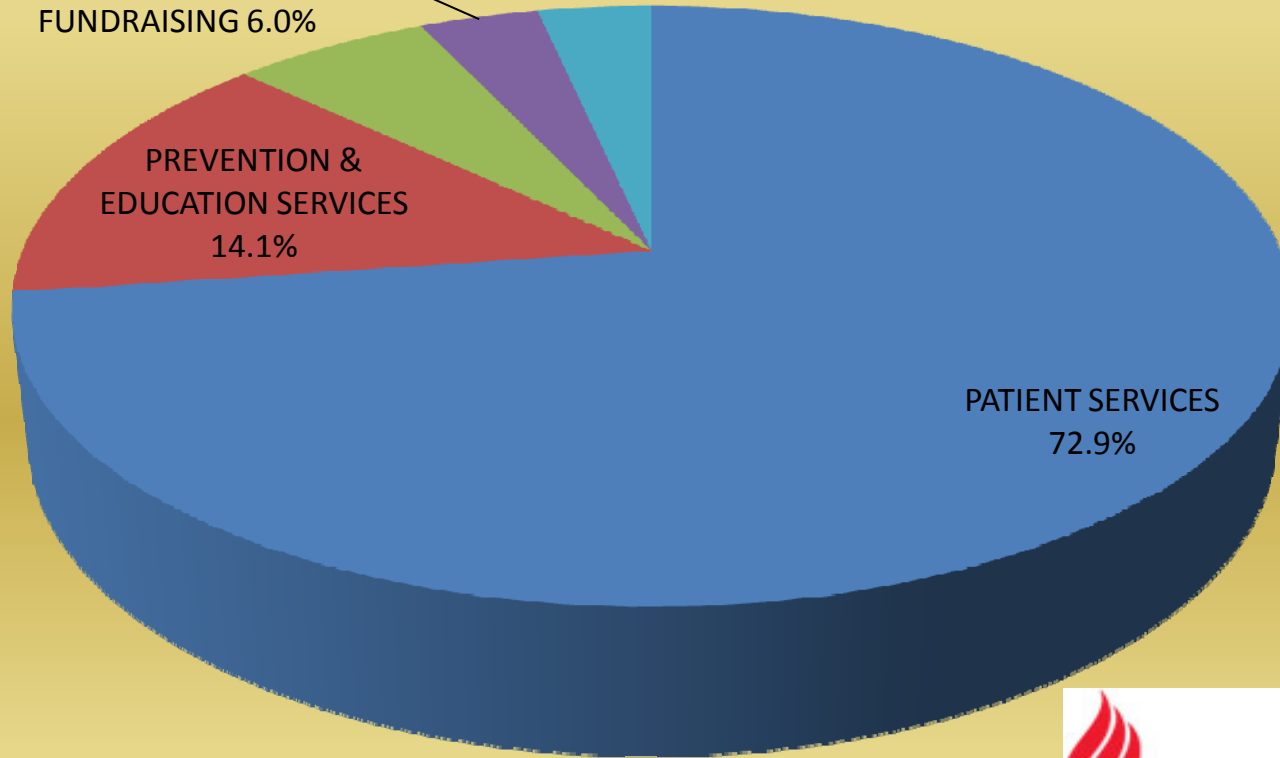
MANAGEMENT &  
GENERAL 3.6%

NET ASSETS 3.4%

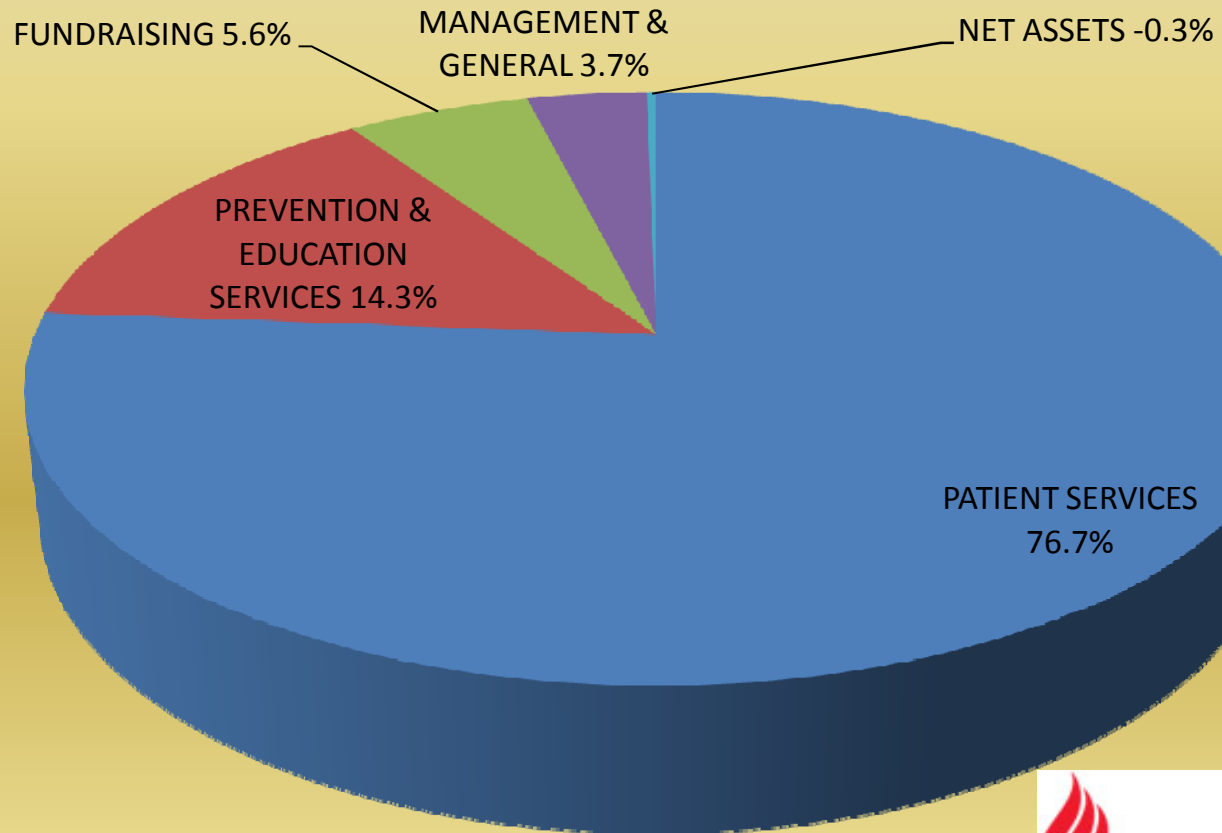
FUNDRAISING 6.0%

PREVENTION &  
EDUCATION SERVICES  
14.1%

PATIENT SERVICES  
72.9%

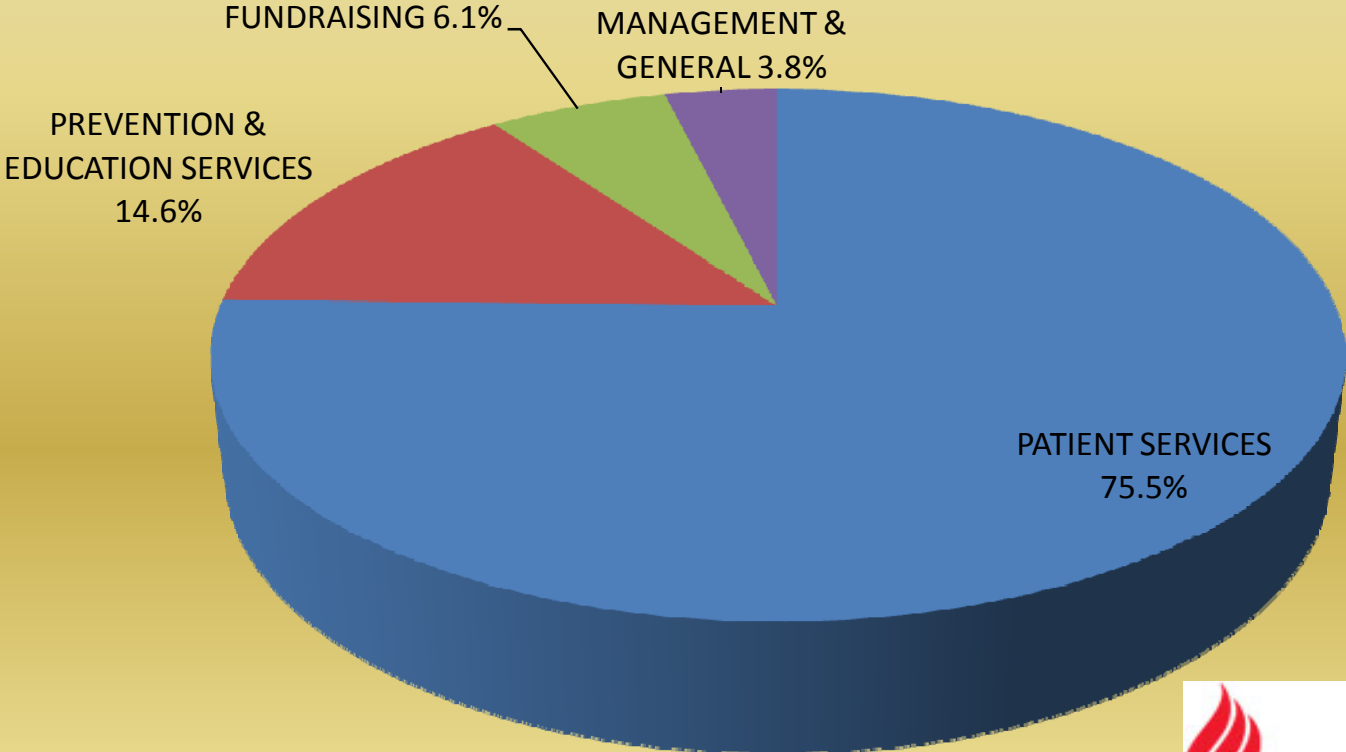


## Where Do The Dollars Raised Go? Year ended June 30, 2011

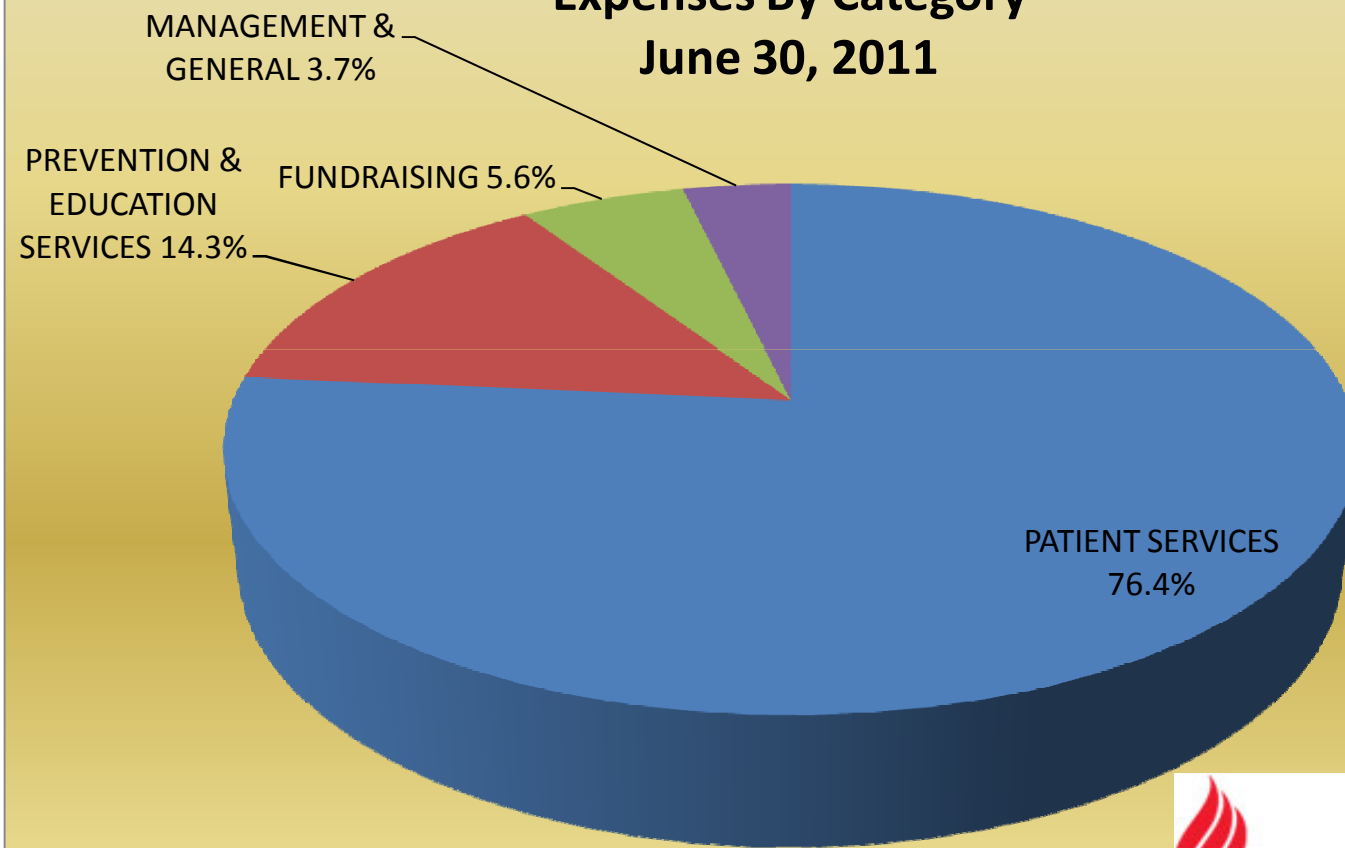


# Expenses By Category

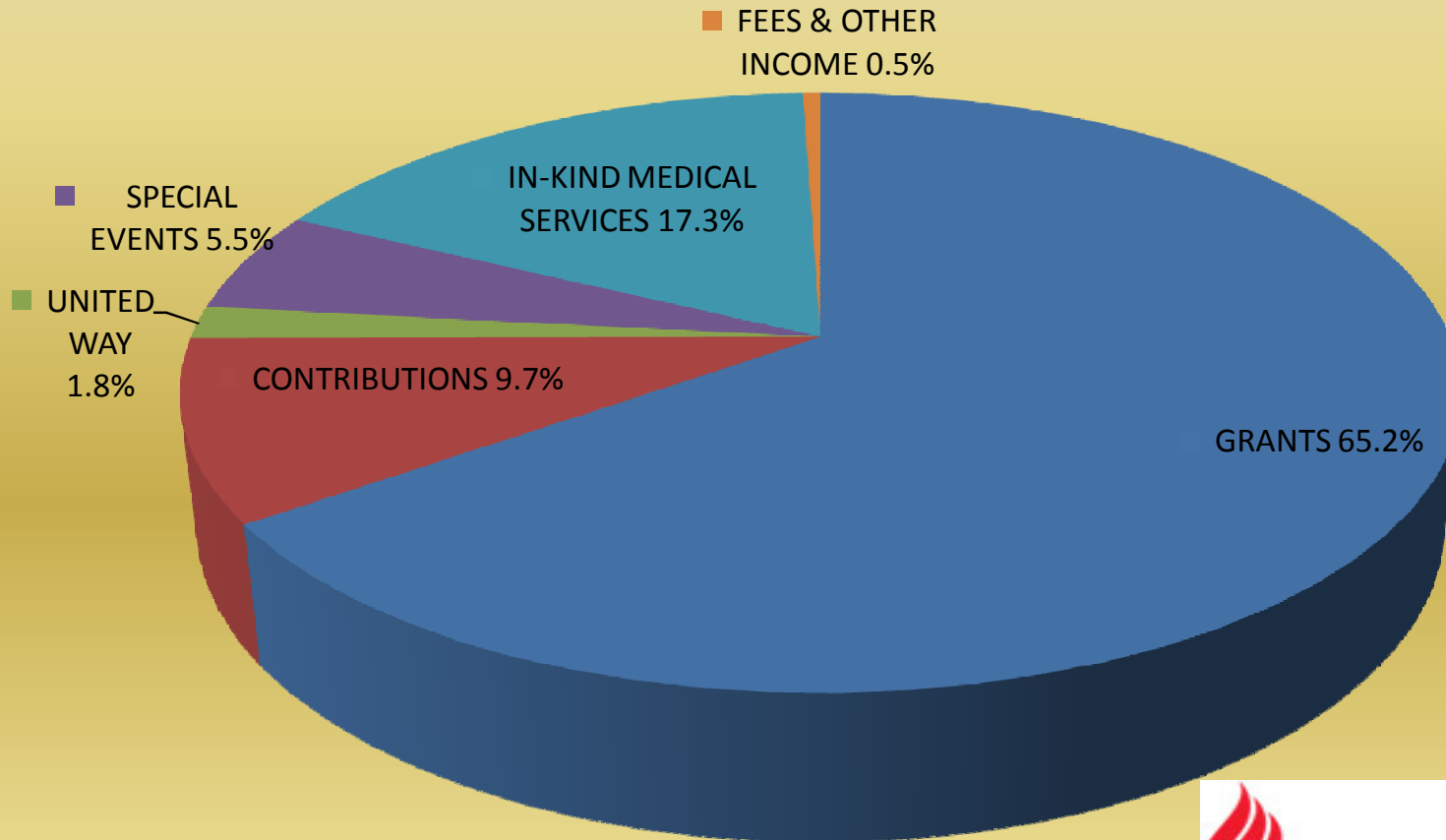
June 30, 2012



## Expenses By Category June 30, 2011



## Revenue By Category Year ended June 30, 2012



## Revenue By Category Year ended June 30, 2011

