

**EPILEPSY FOUNDATION OF FLORIDA, INC.
 FINANCIAL SUMMARY
 YEARS ENDED JUNE 30, 2013 AND 2012**

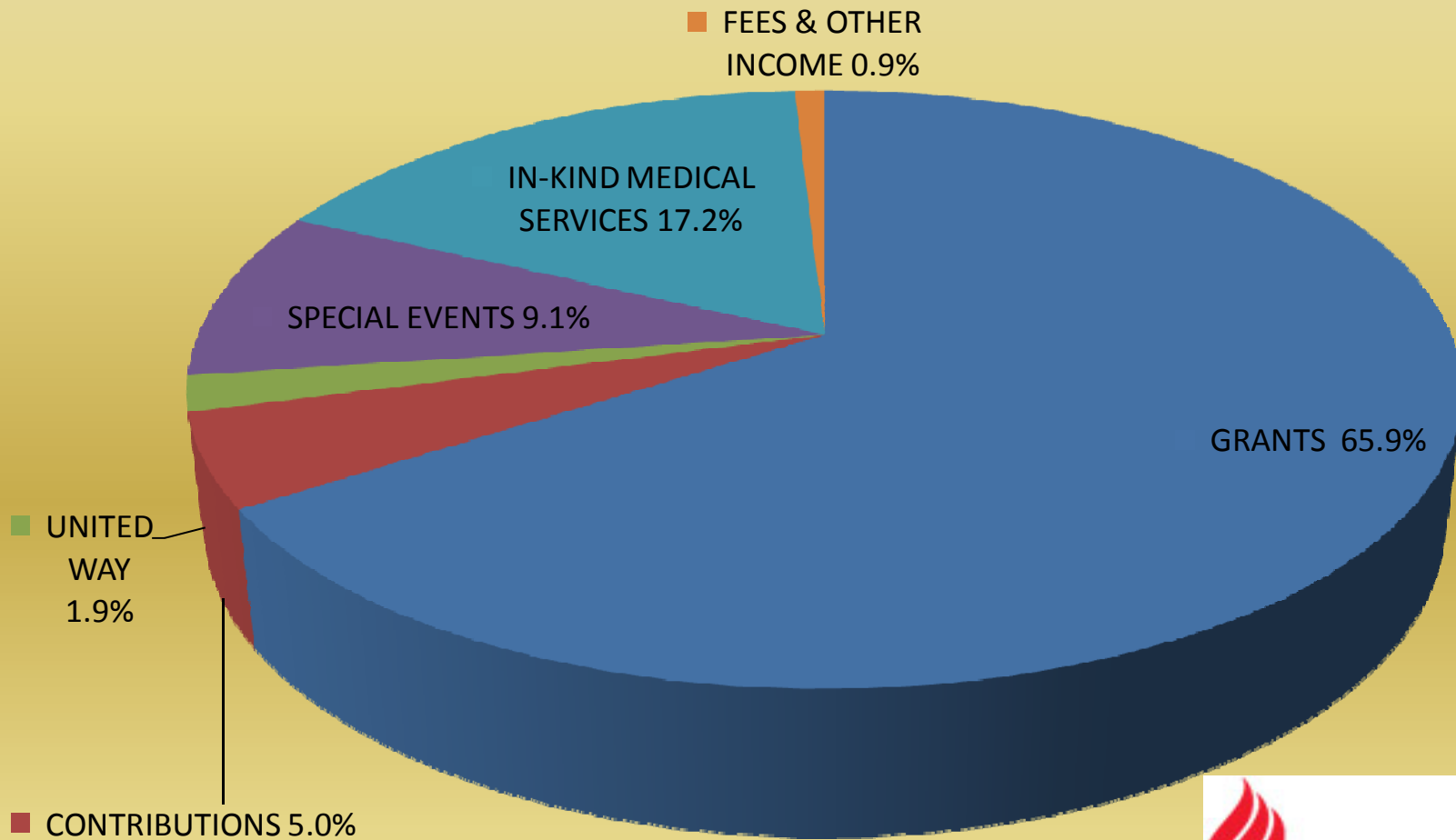
	Year Ended June 30, 2013	Year Ended June 30, 2012
SUPPORTING SERVICES PERCENTAGES:		
SUPPORTING SERVICES PERCENT OF REVENUES	11.4%	9.6%
SUPPORTING SERVICES PERCENT OF EXPENSES	11.5%	9.9%

WHERE DO THE DOLLARS RAISED GO?		
PATIENT SERVICES	73.8%	72.7%
PREVENTION & EDUCATION SERVICES	13.9%	14.3%
FUNDRAISING	4.4%	3.6%
MANAGEMENT & GENERAL	7.1%	6.0%
NET ASSETS	0.8%	3.4%
	<u>100.0%</u>	<u>100.0%</u>

EXPENSES BY CATEGORY:		
PATIENT SERVICES	74.4%	75.2%
PREVENTION & EDUCATION SERVICES	14.0%	14.9%
FUNDRAISING	4.4%	3.7%
MANAGEMENT & GENERAL	7.2%	6.2%
	<u>100.0%</u>	<u>100.0%</u>

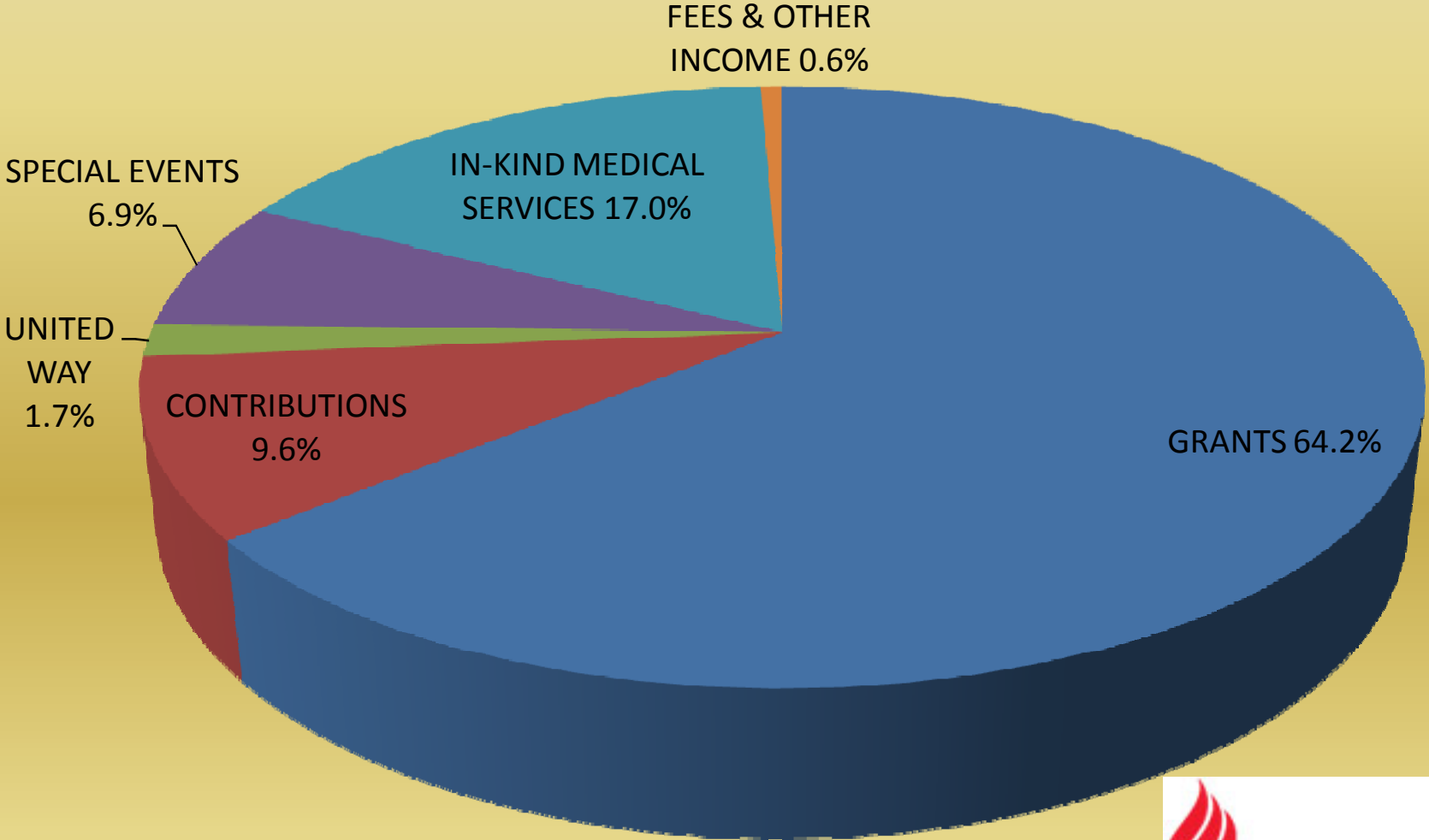
REVENUE BY CATEGORY:		
GRANTS	65.9%	64.2%
CONTRIBUTIONS	5.0%	9.6%
UNITED WAY	1.9%	1.7%
SPECIAL EVENTS	9.1%	6.9%
IN-KIND MEDICAL SERVICES	17.2%	17.0%
FEES & OTHER INCOME	0.9%	0.6%
	<u>100.0%</u>	<u>100.0%</u>

Revenue By Category Year ended June 30, 2013

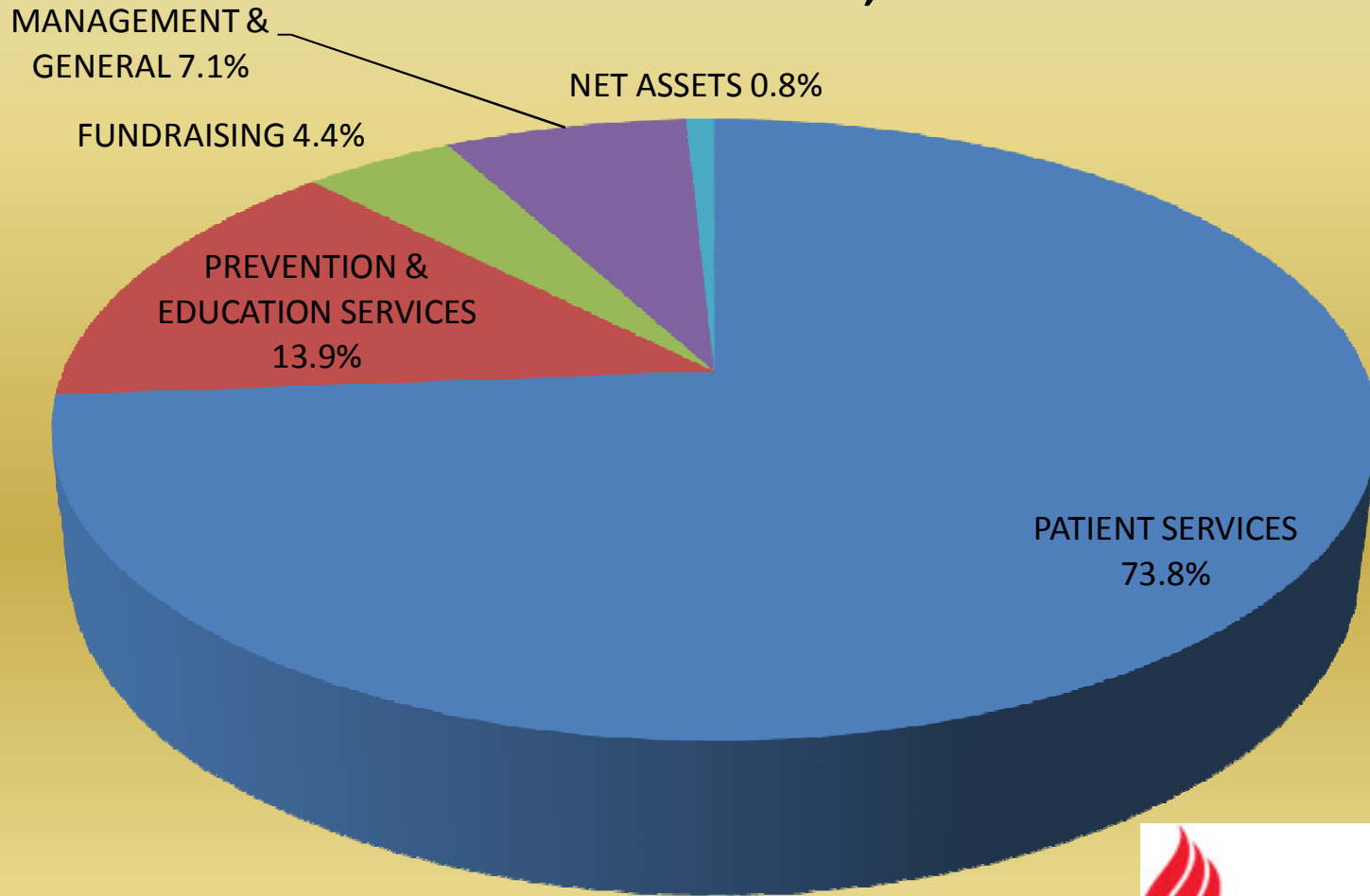


Revenue By Category

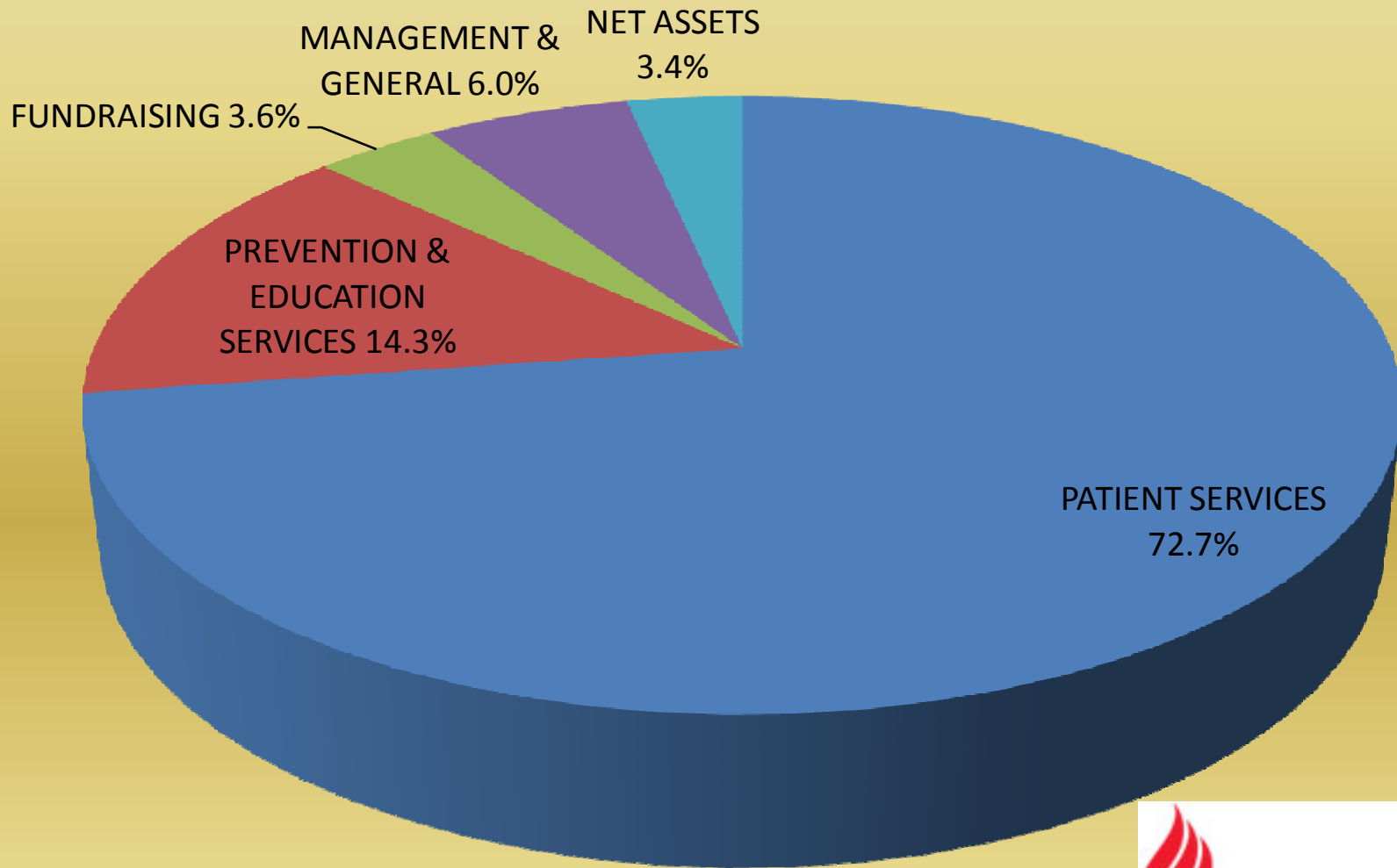
Year ended June 30, 2012



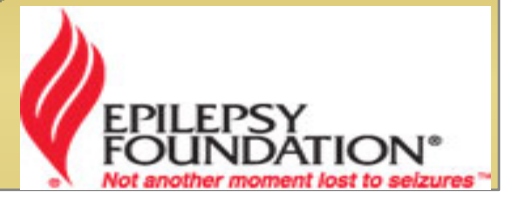
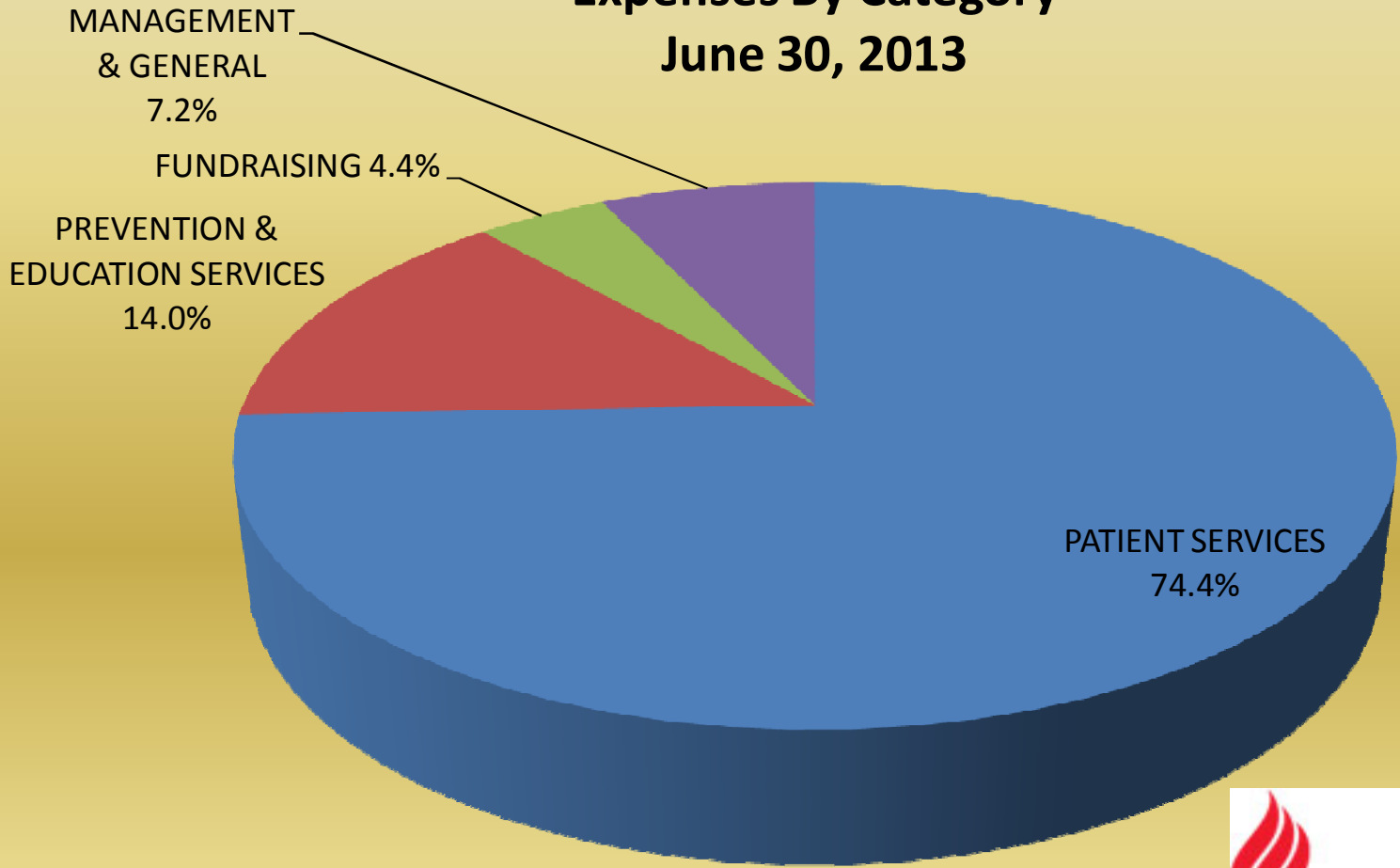
Where Do The Dollars Raised Go? Year ended June 30, 2013



Where Do The Dollars Raised Go? Year ended June 30, 2012



Expenses By Category June 30, 2013



Expenses By Category June 30, 2012

